



"

"

"

"



			000563
			SHAANXI INTERNATIONAL TRUST CO.,LTD.
			SITI
		50	C
			710075
		50	C
			710075
			<a href="http://www.siti.com.cn">http://www.siti.com.cn</a>
			<a href="mailto:sgtdm@siti.com.cn">sgtdm@siti.com.cn</a>



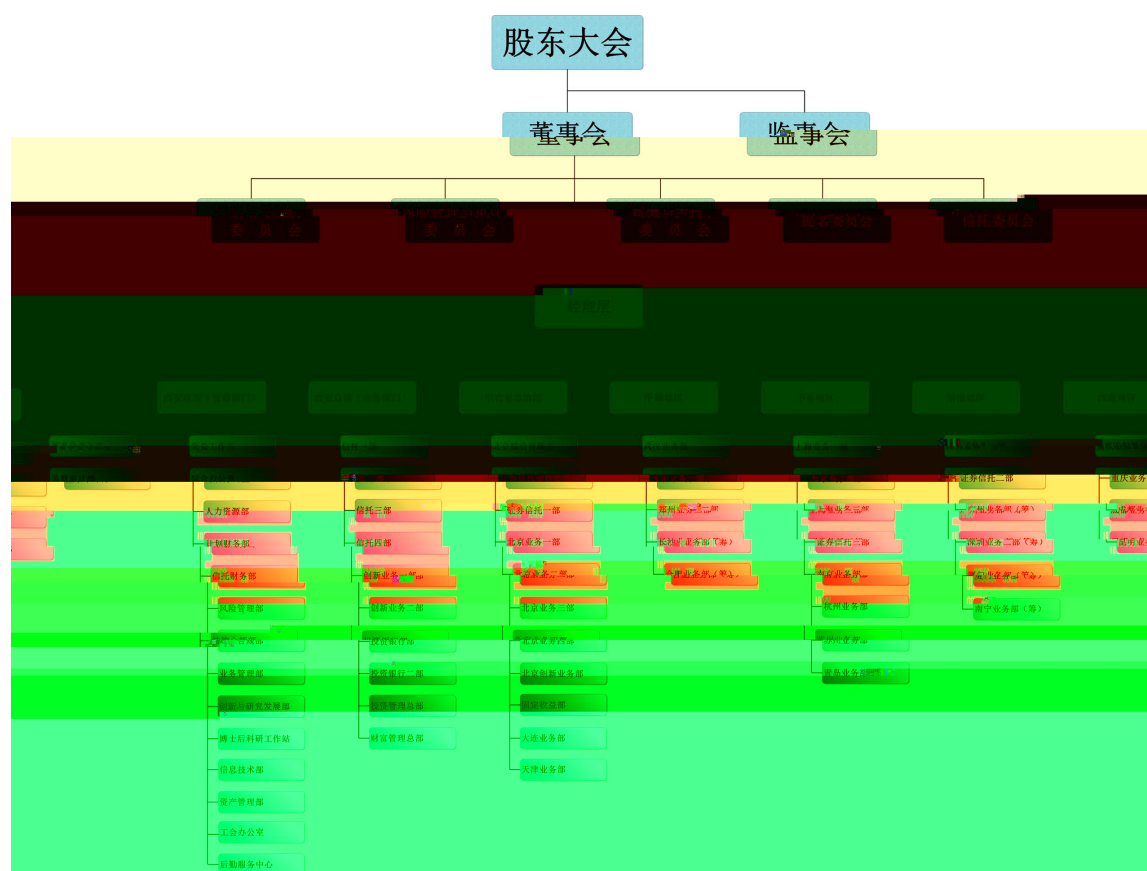

		329,667,576	27.14
			6.2015 12 18
	330,578,512	1,545,245,866	
	534,314,049	34.58	
		329,667,576	21.33
			7. 2015
		3,090,491,732	
	1,068,628,098	34.58	
		659,335,152	
	21.33		

	(
	25 3

√ □

	8		2015.12.18-2016.12.31

□ √



□ √

	2016	2015		2014
	1,013,572,110.40	1,150,972,386.44	-11.94%	835,478,992.49
	515,237,568.79	453,951,218.69	13.50%	350,631,760.50
	419,506,568.20	115,675,811.35	262.66%	300,722,310.09
	157,891,242.55	356,311,669.89	-55.69%	-300,853,688.30
/	0.1667	0.1827	-8.76%	0.1443
/	0.1667	0.1827	-8.76%	0.1443



√ □

	2016	2015	2014	
		-26,754.75	-44,725.97	
	1,030,000.00	550,000.00	410,000.00	
	126,653,866.12	450,568,607.03	66,193,429.12	
	-42,532.00	-57,975.83	-12,769.27	
	31,910,333.53	112,758,469.11	16,636,483.47	
	95,731,000.59	338,275,407.34	49,909,450.41	--

1 ---

1 —

1 —

√ □

	176,200,333.24	
	15,897,417.61	
	-18,973,173.23	



	68.93%
	55.76%
	75.39%
	48.77%
	39.90%
	87.94%

□ √

“ ”

“ ”

			10.14		6.86
12.72%	5.15		13.50%	395	1,385.12
38.28%		244	489.60	122.09	12
2,538.11	35.91%				

1.3

" "

50	PPP	24.86%
		PPP

" "

+

10

4.51

9.2%

" "

" "

" "

## TA CRM

395	1,385.12	244	489.60	122.09
	2,538.11	35.91%		24.86%
			10.14	11.94%
	13.50%			5.15

	2016	2015	
	172,195,056.04	170,949,109.55	0.73%
	563,180,801.02	451,036,063.82	24.86%
“_”	293,562,095.24	525,002,170.58	-44.08%
“_”	-18,973,173.23	-5,359,012.01	-254.04%
	3,607,331.33	9,344,054.50	-61.39%
	1,013,572,110.40	1,150,972,386.44	-11.94%

	39.44%	
		55.69%
31.97%		75.35%

	2016		2015		
	1,013,572,110.40	100%	1,150,972,386.44	100%	-11.94%
	1,013,572,110.40	100.00%	1,150,972,386.44	100.00%	-11.94%
	1,013,572,110.40	100.00%	1,150,972,386.44	100.00%	-11.94%

	675,892,796.81	66.68%	913,524,736.28	79.37%	-26.01%
	18,500,507.96	1.83%			
	25,078,755.81	2.47%	30,339,730.89	2.64%	-17.34%
	59,912,556.91	5.91%	21,303,186.44	1.85%	181.24%
	150,480,714.34	14.85%	126,984,376.21	11.03%	18.50%
	56,558,869.94	5.58%	38,760,426.09	3.37%	45.92%
	27,147,908.63	2.68%	20,059,930.53	1.74%	35.33%

√ □

	1,013,572,110.40			-11.94%	
	1,013,572,110.40			-11.94%	
	675,892,796.81			-26.01%	
	150,480,714.34			18.50%	

1

□ √

□ √

□ √

√

√

5

--	--	--	--

√

5

--	--	--	--

√

	2016	2015		
	287,291,652.69	306,446,089.74	-6.25%	

√

	2016	2015	
	5	4	25.00%
	1.33%	1.01%	0.32%
	8,272,705.47	6,353,554.96	30.21%

	0.82%	0.55%	0.27%
	0.00	0.00	0.00%
	0.00%	0.00%	0.00%

✓

✓

	2016	2015	
	1,196,979,155.47	1,345,145,659.54	-11.01%
	1,039,087,912.92	988,833,989.65	5.08%
	157,891,242.55	356,311,669.89	-55.69%
	3,122,476,519.44	1,923,417,143.01	62.34%
	5,571,308,835.11	3,779,056,619.16	47.43%
	-2,448,832,315.67	-1,855,639,476.15	-31.97%
	2,747,000,000.00	3,967,999,996.20	-30.77%
	1,954,459,795.43	752,326,849.13	159.79%
	792,540,204.57	3,215,673,147.07	-75.35%
	-1,498,400,868.55	1,716,345,340.81	-187.30%

✓

55.69%

31.97%

75.35%

✓

✓

2016		2015			
					68.93%
675,296,574.26	7.10%	2,173,697,442.81	24.86%	-17.76%	
79,972,298.97	0.84%	82,259,376.82	0.94%	-0.10%	
4,042,448,193.63	42.53%	2,150,871,731.84	24.60%	17.93%	
1,711,500,000.00	18.01%	1,541,500,000.00	17.63%	0.38%	
972,212,070.90	10.23%	1,617,706,873.66	18.50%	-8.27%	

2,128,748.25

√ □

	000718		379,144,64 6.55		499,223 ,099.95		-52,511, 185.40	6,563,1 52.35	7,418,5 00.00	3,318,8 59.31	326,633 ,461.15		
	000881		258,468,24 8.15				51,434, 854.45	259,110, 441.85	642,193 .70	614.32	309,903 ,102.60		
	002004		318,714,70 8.63		221,093 ,750.00		-60,739, 120.32	200,000 ,000.00		3,658,2 18.20	257,975 ,588.31		
	000768		141,482,02 1.63				-8,227,7 21.97	196,827 ,586.16	55,345, 564.53	13,613, 163.42	133,254 ,299.66		
	000826		123,775,23 8.71				-5,809,0 76.71	131,804 ,537.50	8,029,2 98.79	94,437. 61	117,966, 162.00		
	002736		104,032,69 4.39				-13,407, 418.79	104,032 ,694.39			90,625, 275.60		
	600478		81,542,082 .34		109,542 ,503.84		-6,581,4 22.34				74,960, 660.00		
	002221		54,638,570 .78				-3,873,8 53.91	54,638, 570.78			50,764, 716.87		
	601198		51,629,454 .16				-7,866,3 97.68	51,629, 454.16			43,763, 056.48		
	430208		45,000,000 .00				-4,260,0 00.00	45,000, 000.00		150,000 .00	40,740, 000.00		

	369,511,511.77	--	77,344,968.00	973,323.23	-12,351,423.80	4,812,17.14	813,680,436.09	128,999,432.52	331,013,311.60	--	--
	1,927,939,177.11	--	907,204,321.79	-18,7173.23	-124,2766.53	1,724,419,254.33	885,115,993.11	149,834,725.38	1,777,599,634.27	--	--
	2016 02 26										
	2016 03 22										

□ √

1	972,212,070.90	1	8,103,666.48
2	145,505,121.20		4,969,333.92
3	93,000,000.00		1,830,000.00
4	2,380,000.00		
5	76,541,411.82	2	630,816.49
7	100,150,000.00		
9	53,000,000.00		
10	200,000,000.00		
12	47,594,032.22		
13	20,000,000.00		
14	300,000,000.00		
15	210,000,000.00		17,640,613.71
<b>16</b>	200,000,000.00		12,506,849.30
17	1,000,000.00		6,123.29
18	999,000,000.00		

	3,465,382,636.14				61,756,249.77
1					1%

2016 97,221.21 2  
1%

√ □

√ □

2015		316,800	174,648.41	318,213.25				273.07		
	--	316,800	174,648.41	318,213.25	0	0	0.00%	273.07	--	0
1 2015		173,351.78		2 2016				1,569.70		3 2016
		174,648.41		4. 2016				273.07		

□ √

□ √

□ √

□ √

□ √

□ √

2017

" "

" " "

2017

“ ” “

” “ ”

1. “ ” ”

”

2.

3.

4.

5.

PPP PPP

6.

√ □

2016 06 02			1.
2016 1 -12			2. 3. 4.
2016 1 -12			
			163
			0
			163
			0

# BOAR

# grip

2016

√ □

( 2015

2015

453,951,218.69

(1) 10%

(2) 43,553,701.83

(3) 5%

(3) 2015 1,454,245,866.4 10

0.30

3p

10 10

2016 4 6


3

1.2014

2014

350,632,780.90

(1) 10%

(2) 7,655,600.82

(3) ,m"

(4) 2015 1,545,245,866 10 0.30  
10 10

3.2016

2015 515,237,568.79

(1) 10%

(2) 31,019,520.28

(3) 5%

(4) 2016 3,090,491,732 10 0.20

2016	61,809,834.64	515,237,568.79	12.00%	0	0
2015	46,357,375.98	453,951,218.69	10.21%	0	0
2014	36,440,020.62	350,631,760.50	10.39%	0	0

√

√

10		0
10		0.20
10		0
		3,090,491,732
		61,809,834.64
		406,932,413.18
		100.00%
2016	3,090,491,732	10 0.20

√ □

			2011 10 31		2011 10 31	
			2011 10 31 1		2011 10 31	
			2011 10 31 2		2011 10 31	
			2012 1 20 " " " 1 " 2 3		2012 01 20	
			2015 7 8		2015 07 08	

" "

420,000,000 34.58%

2014 4 30

" "

2015 11 27

2015 11  
27



;

;

;

			<p>“ ” “ ”</p> <p>[2014]17</p> <p>[2013]110</p> <p>[2015]31</p>	2017 01 16		
			<p>“ ” “ ” A</p> <p>[2014]17</p> <p>[2013]110</p> <p>[2015]31</p> <p>1.</p> <p>2.</p> <p>3.</p> <p>4.</p> <p>5.</p> <p>6.</p> <p>7.</p>	2017 01 16		

---


✓

✓

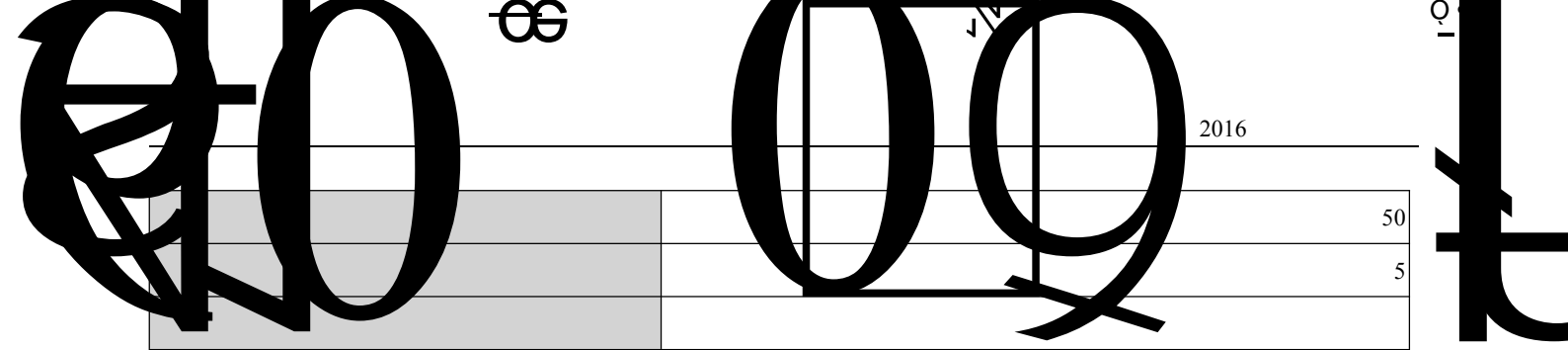
✓

✓

✓

✓

	(
--	---

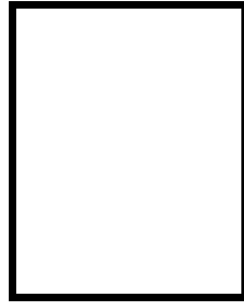


□ √

√ □

0

□ √



5

□ √

□ √  
( )

“ ”

2013 8 7  
2016 3 21

2013

8 9

[2013] 00022-6  
32 4 8,997.5  
2013 4 27 2013 8 13 2016 3 31

2014 6 12

[ 2014 13-1 ]

√ □

□ √

□ √

□ √

□ √

□ √

√ □

(1)

2006 6 12

239, 976, 258. 19

2016 12 31

239, 976, 258. 19

148, 952, 342. 20

17, 040, 715. 55

131, 911, 626. 65

2014

3.05  
 3 " 16 CP003" 5% 100 /  
 " 16 CP003" " " 3  
 " 16 CP003" " " 6  
 0 0

(2)

2015 2 13 A 2,000  
 2016 8 5  
 2015 3 30 2  
 2015 10 29 20,000  
 3  
 2016 8 19 50,000.00  
 3  
 2016 9 19 A 1,000  
 2016 9 27 49,000.00  
 1  
 2016 12 20 10  
 2

2006-20	2006 06 17	www.cninfo.com.cn

□ √

□ √

√ □

C 6  
1,905,944.11

2020 7 1

2016

15

14,679,709.50

10%

□ √

10%

□ √

□ √

□ √

□ √

√ □

" 2016 " " 9 11 257 "

		/
	—	—
1.		
2.		4.4032
3.		103
	—	—
1.	—	—
1.1	—	
1.2		
1.3		
1.4		
2.	—	—
2.1		
2.2		
2.3		
3.	—	—
3.1		
4.	—	—
4.1		
4.2		

4.3		
5.	—	—
5.1		
6.	—	—
6.1	—	
6.2		
7.	—	—
7.1" "		
7.2 " "		
7.3		
7.4		
8.	—	—
8.1		
8.2		
8.3		
9.	—	—
9.1.		
9.2.		
9.3.		
	—	—

15

□ √ □

√ □

1

2016

2

2016

2017 3 7

www.cninfo.com.cn

2016	868,686.25	3,871.70	2,437.95	33,911.89	-	908,907.79	36,349.85	8.54%
2015	390,801.53	23,858.25	4,490.99	2,310.83	301.49	421,763.09	7,103.31	1.68%

	572,267.55	≥2	
	104,973.49		
	144,314.01		
	249,287.49		
/	229.56%	≥100%	
/	74.05%	≥40%	

		( )			( )
	67,529.66	7.10		0.00	0.00%
	22,832.20	2.40		55,000.00	5.79%
	35,078.40	3.69		177,759.96	18.70%
	171,150.00	18.01		116,150.00	12.22%
	404,244.82	42.53		321,925.12	33.87%
	97,221.21	10.23		279,631.61	29.42%
	113,338.85	11.92			
	39,071.55	4.11			
	950,466.69	100.00		950,466.69	100.00%

1.  
(1)

01

	2016 12 31	
--	------------	--

---

:			:		
	4,848,255,108.32	6,163,795,983.38		-	-
	-	-		-	-
	99,200,396,394.23	52,483,399,132.67		-	-
	-	-		-	-
	2,870,047,218.00	2,027,313,641.00		-	-
	-	-		33,8;	00

---

“ ” )	-	-
	67,089,636.65	122,747,555.53
	1,732,845,272.18	1,781,748,701.34
	-	-
	29,480.00	7,710.00
	-	-

	6,978,778.47	10,641,828.69
	329,063.49	412,551.15
	1,296,947.46	2,354,402.18
	80,261.36	163,354.23
	8,685,050.78	13,572,136.25

(2)

	1,188,894.61	1,376,001.72
	5,661,634.04	5,001,775.73
	3,139,860.88	5,431,188.72
	9,990,389.53	11,808,966.17

5.

(1)

	108	1,546,876.85	4.90%
	136	3,349,111.33	6.86%
	244	4,895,988.18	6.25%

(2)

	83	1,106,838.58	0.34%	4.43%
	9	135,330.00	1.03%	8.87%
	31	760,360.00	1.13%	8.42%

(3)

	77	1,764,902.00	0.11%	7.16%
	44	1,128,557.60	0.17%	6.76%

6.

	220	8,736,890.94
	175	5,114,290.00

	198	8,029,766.94
	197	5,821,414.00

7.

8.

	322,000.00	200,000.00	2,000.00	520,000.00
	322,000.00	200,000.00	2,000.00	520,000.00

9

	)	( )
172,857.70	22,542.30	195,400.00

10

( )	( )	( )
1,327.97	140,426.28	141,754.25

11.

—

2017 01 18    2017 02 08    2017 2 14    2017 2 21    2017 2 23

□    √

	330,578,512	21.39%			330,578,512	-432,528,926	-101,950,414	228,628,098	7.40%
2.	209,472,581	13.55%			209,472,581	-190,317,064	19,155,517	228,628,098	7.40%
3.	121,105,931	7.84%			121,105,931	-242,211,862	-121,105,931	0	0.00%
	1,214,667,354	78.61%			1,214,667,354	432,528,926	1,647,196,280	2,861,863,634	92.60%
1.	1,214,667,354	78.61%			1,214,667,354	432,528,926	1,647,196,280	2,861,863,634	92.60%
	1,545,245,866	100.00%			1,545,245,866	0	1,545,245,866	3,090,491,732	100.00%

√ □

1 2016 4 6 2015 2015  
1, 545, 245, 866 10 0. 30  
10 10 1, 545, 245, 866  
3, 090, 491, 732 2016 3 29  
2 2015  
432, 528, 926 2016 12 30 2016 12 28

√ □

1 2015 2016 3 21 2015  
2015 1, 545, 245, 866 10 0. 30  
10 10  
2 2015 11 16  
2015 2538 2015  
8 A 330, 578, 512  
2015 0126 2015 11 30  
3, 167, 999, 996. 20

3,166,719,417.69 2015

2015 12 18

√ □

1 2015

2016 4 6

1

1

2016 4 6

√ □

□ √

√ □

	114,314,049	0	114,314,049	228,628,098	2015 2015 228,628,098	2018 12 18
	41,313,181	82,626,362	41,313,181	0	2016 4 6 2015 82,626,362	2016 12 30
	41,259,814	82,519,628	41,259,814	0	2016 4 6 2015 82,519,628	2016 12 30
	34,338,006	68,676,012	34,338,006	0	2016 4 6 2015	2016 12 30

					68,676,012	
	29,735,537	59,471,074	29,735,537	0	2016 4 6 2015 59,471,074	2016 12 30
	28,073,347	56,146,694	28,073,347	0	2016 4 6 2015 56,146,694	2016 12 30
	25,772,004	51,544,008	25,772,004	0	2016 4 6 2015 51,544,008	2016 12 30
	15,772,574	31,545,148	15,772,574	0	2016 4 6 2015 31,545,148	2016 12 30
	330,578,512	432,528,926	330,578,512	228,628,098	--	--

□ √

√ □

1 2016 4 6

2015

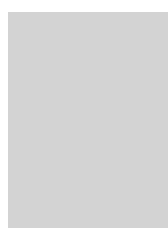
2015

1,245,866

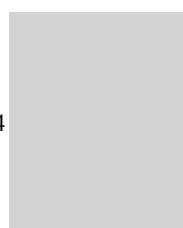
10,300

3

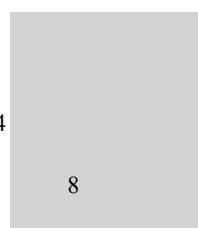
□ √



92,034



103,804



0



1		31,545,148		31,545,148
		20,657,232		20,657,232
10 10	10	1	2	10
				10
10				
	4			

10                      10

□    √

10                      10

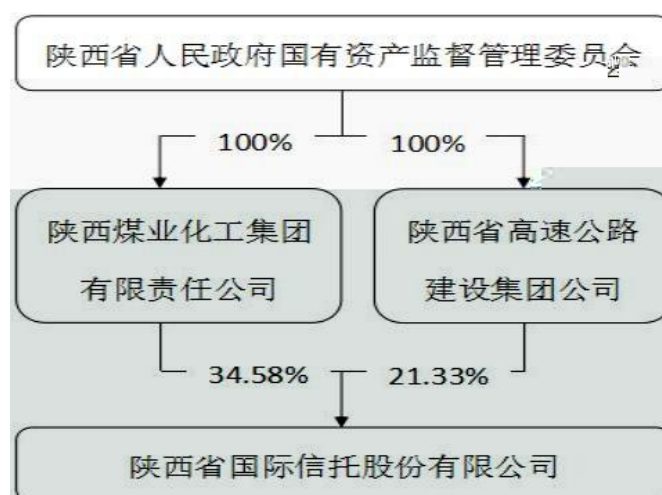
	/			
		2004 02 19	76256877-8	
	2016 12 31	601225 63.69%	000883 3.11%	*ST

(600984)21.25%

□ √

	/			
		2004 06 22	71978336-8	

□ √



□ √

√ □

	/			
		1996 09 24	20	

---

--	--	--	--	--

□ √

□ √



				1971.10	2015 07 20	2016 04 22	0	0	0	0	0
				1957.04	2006 02 06	2016 04 22	0	0	0	0	0
				1964.02	2006 02 06	2016 12 14	0	0	0	0	0
				1966.04	2013 01 31	2016 04 22	0	0	0	0	0
				1967.09	2014 05 13	2016 04 22	0	0	0	0	0
				1966.01	2014 05 13	2016 04 22	0	0	0	0	0



2016 04 22                      2016 4 22                      2016 1

2016 04 22

2016 04 22                      2016 4 22                      2016 1

2016 04 22                      2016 4 22

---

			2016 04 22	2016 4
--	--	--	------------	--------

1961 10

1971 7

1963 12

1963 5

1958 10

1953 11

1961 10

1959 6

1967 10

, 1972 2

1966 4

1957 10

1972 12

1967 9

1966 1

1964 5

1965 11

1971 2

√ □

			2011 09		
			2015 09		
			2006 03		

			2015 10		

√ □

			2011 11		
			1996 07		
			2000 09		
			1997 12		

□ √

2015 11 10

2015

			1961.10		172.43
			1971.07		131.03
			1963.12		0
			1963.05		0
			1958.10		4.5
			1953.11		3.375

			1961.10		3.375	
			1959.06		0	
			1972.02		0	
			1967.10		68.65	
			1971.07		131.03	
			1964.02		80.80	
			1966.04		94.44	
			1957.10		121.08	
			1972.12		72.65	
			1967.09		67.22	
			1966.01		88.65	
			1964.05		0	
			1965.11		86.78	
			1971.02		83.47	
			1957.04		87.35	
			1956.12		0	
			1954.10		1.125	
			1955.04		1.125	
			1971.10		0	
	--	--	--	--	1168.05	--

:1

45%-70%

□

	367
	367
	13
	61

	211
	31
	7
	23
	95
	367
	17
	191
	159
	367

2016 12 31

367

	13	3.54%
	199	54.22%
	31	8.45%
	11	3.00%
	23	6.27%
	79	21.53%
	11	3.00%
	17	4.63%
	191	52.04%
	159	43.32%
30	110	29.97%
30 44	171	46.59%
45 55	79	21.53%

55	7	1.91%
		100.00%

2

3

2016

5.

	367
	13,793.87
	13.61%
/	96.21
/	37.58

919

7

1

□ √

13

1		2016 19	2016 24	2	1.2015 2.2015 3.2015 4.2015 5.2015 6.2016 7. 2016 8. 9.2016 10. 2016 11.2015 12.2015 13. 2015 14. 15.2015 16. 2015	<a href="http://www.cninfo.com.cn">www.cninfo.com.cn</a>	2016 26	2
2		2016 18	2016 21	3	1.		2016 23	3
3		2016 1	2016 5	4	1. 2. 3. 4. 5.		2016 7	4

					6.		
					7.		
					8.	2016 1	
4		2016 7	42016 8	4	1.	2015	2016 4 9
5		2014 21	42016 22	4	1.		2016 4 26
					2.		
					3.		
					4.		
					5.		
					6.		
					7.		
					8.		
6		2016 26	42016 28	4	1.	2016	2016 4 29
7		2016 24	52016 26	5	1.	“ 2 ”	2016 5 27
					2.	“ ”	
8		2016 16	82016 19	8	1.	“ ”	2016 8 23
					2.	2016	
9		2016 19	82016 29	8	1.	2016	2016 8 31
10		2016 30	92016 8	10	1.	“ ”	
11		2016 24	102016 28	10	1.	2016	2016 10 31
12		2016 29	112016 2	12	1.		

13		2016 12 9	2016 12 13		1.			2016 12 14
----	--	--------------	---------------	--	----	--	--	---------------

			13	7	6	0	0	
			13	7	6	0	0	
			13	7	6	0	0	
			4	3	1	0	0	
			9	4	5	0	0	

			4	3	1	0	0
			13	7	6	0	0
			4	3	1	0	0
			9	4	5	0	0
			9	4	5	0	0
							2

√

√

www.cninfo.com.cn

1	2016 2 24		2015	
2			2015	
3			2016	
4				
5				
6			2016	
7				
8			2015	
9	2016 4 5			
10	2016 4 22			
11	2016 5 26		“ ”	
12	2016 8 29			




1. 1 2016 2016 5 26 2 00 2705  
 " " " "  
 2 2016 2016  
 10 12 2 30 2705  
 2. 2016 1 2016 6 8  
 3. 2016 7  
 5  
 1 2016 2  
 ①2016 2 17 2015  
 2015  
 ②2016 2 22 2015  
 2015 2015 2015 2016  
 2015 2015 2015  
 2016  
 2 2016 3  
 ①2016 4 27 2016  
 ②2016 8 28 2016  
 ③2015 10 24 2016  
 4. 1 2016 1 2016 2 19  
 2015  
 2015 2 2016  
 2 2016 11 23 2705  
 2015  
 5. 2016  
 1 2016 2 19 "  
 " 2 2016 4 22  
 3 2016 8 29 2016  
 19 < >

□ √



2016

1.2016 2 24

8

2



3

4

5

2.

1

È

È

"

"

"

"

; \*6"1493

EW44 \_FO "



3.

4.

.

2016

2016

2

2

2016

,

3

2016

" "

4

3

( )

2

	1. 1	
	5% 1 2	
	5000 3 5%	
	5% 5000	
		0
		0
		0
		0

√ □

	2017 03 07
	2016

□ √

√ □

2016

87

--	--	--	--	--

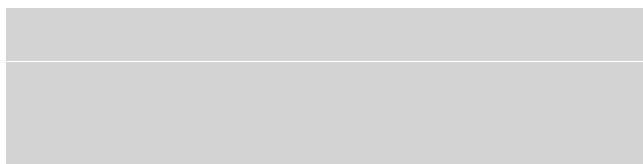
1	—2015 [2016-01]	2016-01-08	
2	—2015 —2015 —2015 —2015 [2016-02] — 2015 [2016-04] —2015 —2015 —2015 — [2016-05] — 2016 [2016-06] — 2016 [2016-07] — [2016-08] — 2015 [2016-09] — [2016-10] —2015 —2015 —2015 — — — — 2015	2016-02-26	www.cninfo.com.cn
3	— 2015 [2016-11] — 2015 [2016-12]	2016-03-15	
4	—2015 [2016-13] —2015	2016-03-22	
5	— [2016-14]	2016-03-23	
6	—2015 [2016-15]	2016-03-29	
7	— [2016-16]	2016-03-31	
8	— [2016-17] — — 2016 [2016-18] —2016 — [2016-19] — [2016-20]	2016-04-07	
9	— — — [2016-21] — (2016 4 )	2016-04-09	

	— — —	2015  2016  [2016-22]  [2016-23]		
10	—	—2016 1 [2016-24]	2016-04-12	
11	—	— 2016 [2016-25]	2016-04-16	
12	— —	—2016 [2016-26] —2016	2016-04-23	
13	— — —	[2016-27] [2016-28]	2016-04-26	
14	— —	—2016 [2016-29] —2016	2016-04-29	
15	— — —	[2016-30]  [2016-31]	2016-05-27	
16	—		2016-05-28	
17	—	—2016 [2016-32]	2016-07-08	
18	— —	[2016-33] [2016-34]	2016-08-23	
19	— — — —	—2016 [2016-35] —2016 [2016-36] —2016	2016-08-31	
20	—	— 2016	2016-09-02	
21	—	—2016 [2016-37]	2016-10-13	
22	—	[2016-38]	2016-10-14	
23	—	[2016-39]	2016-10-21	
24	—	[2016-40]	2016-10-28	
25	— —	—2016 [2016-41] —2016 [2016-42]	2016-10-31	
26	—	[2016-43]	2016-11-04	
27	—	[2016-44]	2016-11-10	
28	—	[2016-45]	2016-11-11	
29	—	[2016-46]	2016-11-14	
30	—	[2016-47]	2016-11-21	
31	—	[2016-48]	2016-11-28	
32	—	[2016-49]	2016-12-05	
33	—	[2016-50]	2016-12-12	
34	— —	[2016-51] [2016-52]	2016-12-14	

---

35	—	[2016-53]	2016-12-16		
36	—	[2016-54]	2016-12-21		
37	—	[2016-55]	2016-12-28		
	—	[2016-56]			
	—				
38	—	[2016-57]	2016-12-29		





2017 3 3

(

2017 02 13

	675,296,574.26	2,173,697,442.81
	228,322,005.88	516,109,411.00

	972,212,070.90	1,617,706,873.66
	79,972,298.97	82,259,376.82
	2,128,748.25	1,280,481.25
		376,881.86
	228,982,829.78	178,376,419.58
	104,502,892.75	14,708,770.04
	7,141,747,034.28	5,587,080,535.05
	9,504,666,886.70	8,743,858,003.24
	214,000,000.00	300,000,000.00
	333,383,734.92	278,938,719.85
	142,359,769.09	212,714,384.67
	1,739,645.33	613,155.56

	1,065,906.32	1,065,906.32
	83,926,293.01	64,234,430.20
	999,000,000.00	130,000,000.00
	1,775,475,348.67	987,566,596.60
	830,933.06	1,644,826.09
		100,505,398.38
	830,933.06	102,150,224.47
	1,776,306,281.73	1,089,716,821.07
	3,090,491,732.00	1,545,245,866.00
	2,744,130,845.69	4,289,376,711.69
	-92,653,324.94	302,007,445.07
	118,025,851.43	92,263,972.99
	248,029,795.23	196,506,038.34

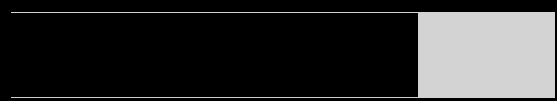
	126,278,121.85	95,258,601.57
	1,494,057,583.71	1,133,482,546.51
	7,728,360,604.97	7,654,141,182.17
	7,728,360,604.97	7,654,141,182.17
	9,504,666,886.70	8,743,858,003.24

	1,013,572,110.40	1,150,972,386.44
	172,195,056.04	170,949,109.55
	208,088,999.36	220,070,715.62
	35,893,943.32	49,121,606.07
	563,180,801.02	451,036,063.82
	570,358,929.39	456,493,217.81
	7,178,128.37	5,457,153.99
" - "	293,562,095.24	525,002,170.58
	-18,973,173.23	-5,359,012.01
" - "	-	-
	3,607,331.33	9,344,054.50
	329,015,899.06	543,268,016.85
	29,737,229.15	69,366,011.80
	287,291,652.69	306,446,089.74
	10,339,701.83	165,367,688.84
	1,647,315.39	2,088,226.47
" - "	684,556,211.34	607,704,369.59
:	1,031,500.00	612,001.37
	-	-
:	44,032.00	146,731.95
	-	26,754.75

2016

543,67

608,169, 9.01



	287,929,399.44	
	808,925,743.36	681,728,631.25
		162,200,000.00
		150,000,000.00
	3,160,849.00	3,516,740.90
	96,963,163.67	47,700,287.39
	1,196,979,155.47	1,345,145,659.54
	86,000,000.00	
		461,338,749.83
	170,000,000.00	
	150,784,000.00	
	10,950,561.70	9,821,046.45
	171,420,396.47	133,284,860.71
	15,012,547.78	13,742,194.38
	322,514,198.53	216,632,774.26
	112,406,208.44	154,014,364.02
	1,039,087,912.92	988,833,989.65
	157,891,242.55	356,311,669.89
	3,104,198,093.28	1,859,773,032.08
	18,278,426.16	63,401,551.93
		242,559.00

	3,122,476,519.44	1,923,417,143.01
	8,562,135.21	5,338,208.57
	5,562,746,699.90	3,773,718,410.59
	5,571,308,835.11	3,779,056,619.16
	-2,448,832,315.67	-1,855,639,476.15
		3,167,999,996.20
	2,747,000,000.00	800,000,000.00
	2,747,000,000.00	3,967,999,996.20
	46,357,375.98	36,440,020.62
	1,908,102,419.45	715,886,828.51
	1,954,459,795.43	752,326,849.13
	792,540,204.57	3,215,673,147.07
	-1,498,400,868.55	1,716,345,340.81
	2,173,697,442.81	457,352,102.00
	675,296,574.26	2,173,697,442.81

	1,545,245,866.00				4,289,376,711.69		302,007,445.07	92,263,972.99	196,506,038.34	95,258,601.57	1,133,482,546.51		7,654,141,182.17
	1,545,245,866.00				4,289,376,711.69		302,007,445.07	92,263,972.99	196,506,038.34	95,258,601.57	1,133,482,546.51		7,654,141,182.17
	“ ” 1,545,245,866.00				-1,545,245,866.00		-394,660,770.01	25,761,878.44	51,523,756.89	31,019,520.28	360,575,037.20		74,219,422.80
							-394,660,770.01				515,237,568.79		120,576,798.78
1													
2													
3													
4													
								25,761,878.44	51,523,756.89	31,019,520.28	-154,662,531.59		-46,357,375.98
1									51,523,756.89		-51,523,756.89		

2										31,019, 520.28	-31,019, 520.28		
3.								25,761, 878.44			-25,761, 878.44		
4											-46,357, 375.98		-46,357, 375.98
5													
	1,545, 245,86 6.00				-1,545,2 45,866. 00								
1	1,545, 245,86 6.00				-1,545,2 45,866. 00								
2													
3													
4													
	3,090, 491,73 2.00				2,744,1 30,845. 69		-92,653, 324.94	118,025, ,851.43	248,029 ,795.23	126,278 ,121.85	1,494,0 57,583. 71		7,728,3 60,604. 97

	1,214, 667,35 4.00				1,453,2 35,806. 00		45,970, 781.97	69,566, 412.06	151,110 ,916.47	51,704, 899.74	827,617 ,733.07		3,813,8 73,903. 31

	1,214, 667,35 4.00				1,453,2 35,806. 00		45,970, 781.97	69,566, 412.06	151,110 ,916.47	51,704, 899.74	827,617 ,733.07		3,813,8 73,903. 31
	330,57 8,512. 00				2,836,1 40,905. 69		256,036 ,663.10	22,697, 560.93	45,395, 121.87	43,553, 701.83	305,864 ,813.44		3,840,2 67,278. 86
							256,036 ,663.10				453,951 ,218.69		709,987 ,881.79
	330,57 8,512. 00				2,836,1 40,905. 69								3,166,7 19,417. 69
1	330,57 8,512. 00				2,836,1 40,905. 69								3,166,7 19,417. 69
2													
3													
4													
								22,697, 560.93	45,395, 121.87	43,553, 701.83	-148,08 6,405.2 5		-36,440, 020.62
1									45,395, 121.87		-45,395, 121.87		
2										43,553, 701.83	-43,553, 701.83		
3.								22,697, 560.93			-22,697, 560.93		
4											-36,440, 020.62		-36,440, 020.62
5													
1													
2													



1 1 12 31

12

1

2

†

2

3

-

4

5

6

7

500



---

1 2	20.00%	20.00%
2 3	50.00%	50.00%
3	100.00%	100.00%

√

√

1

a.

b.

a.

b.

c.

d.

2

3

20%

50%

4

4,000

		30	5.00%	3.167%

---

		3	5.00%	31.667%
		4	5.00%	23.75%
		5	5.00%	19%

( ) ( )

2

,

:

3

4

a.

b.

1  
2

1 ( 1 )

1

2

1

2

3

90

90

90

4

5

1

2

10%

2012 20

1.5%

1.5%

5%

3

2014

12

10

"

2014 50

"

1%

4

1%

5%

□ √

□ √

		6%
		7%
		25%
		5%
		3%
		2%

	2,144.01	17,334.21



□ √

□ √

	3,801,819.44	4,335,151.76
	3,801,819.44	4,335,151.76

2

□ √

	7120823	85.51%	4077107	57.26%	304,371,5	75.58				
	17.22		41.64							
	118,590,	14.24%	33,283,2	28.07%	85,307,29	286,615	100.00%	23,980,14	8.3	.3
	553.08		60.48		2.60	,605.94		3.32		

	2,073,169.33	0.25%	1,036,584.67	50.00%	1,036,584.67				
	832,746,039.63		442,030,586.79		390,715,452.84	286,615,605.94		23,980,143.32	262,635,462.62

√ □

	494,978,211.74	299,158,688.90	60.44%	
	217,104,105.48	108,552,052.74	50.00%	
	712,082,317.22	407,710,741.64	--	--

√ □

	2,073,169.33	1,036,584.67	50%	
	2,073,169.33	1,036,584.67	/	/

√ □

1			
1	40,754,737.78	2,037,736.88	5.00%
1 2	30,474,409.12	6,094,881.82	20.00%
2 3	44,421,528.81	22,210,764.41	50.00%
3	2,939,877.37	2,939,877.37	100.00%
	118,590,553.08	33,283,260.48	

□ √

□ √

10,339,701.83

0.00

	1,678,264.21	1,239,087.72
	109,764,704.75	96,950,143.14
		182,921,401.00
	9,220,753.45	5,504,974.08
	712,082,317.22	
	832,746,039.63	286,615,605.94

		494,978,211.74	3	59.44%	299,158,688.90
		217,104,105.48	3	26.07%	108,552,052.74
		109,764,704.75	3	13.18%	29,946,501.41
		2,364,394.26	3	0.28%	2,343,103.51
		2,073,169.33	1	0.25%	1,036,584.67
	--	826,284,585.56	--	99.22%	441,036,931.23

□ √

□ √

128,079,990.22 48.77%

□ √

□ √

□ √

	714,000,000.00	
	714,000,000.00	

	/	/	/	/
	1,700,000,000.00	/	1,530,000,000.00	/
	23,000,000.00	11,500,000.00	23,000,000.00	11,500,000.00
	1,723,000,000.00	11,500,000.00	1,553,000,000.00	11,500,000.00

170,000,000.00 11.03%

1.


	/	/	/	/
	/	/	/	/
	/	/	/	/
	1,700,000,000.00	/	1,530,000,000.00	/
	250,000,000.00	/	350,000,000.00	/
	/	/	430,000,000.00	/
	1,450,000,000.00	/	750,000,000.00	/
	23,000,000.00	11,500,000.00	23,000,000.00	11,500,000.00
	/	/	/	/
	/	/	/	/
	23,000,000.00	11,500,000.00	23,000,000.00	11,500,000.00

2.

/	/
1,723,000,000.00	1,553,000,000.00

	90	360	3			90				
	/	/	/	/	/	/	/	/	/	/
	/	/	/	/	/	/	/	/	/	/
	/	/	/	23,000,000.00	23,000,000.00	/	/	23,000,000.00	/	23,000,000.00
	/	/	/	23,000,000.00	23,000,000.00		/	23,000,000.00	/	23,000,000.00

5.

	11,500,000.00	/	8,050,000.00	/
	/	/	3,450,000.00	/
	/	/	/	/
	/	/	/	/
	/	/	/	/
	/	/	/	/
	/	/	/	/
	/	/	/	/
	11,500,000.00	/	11,500,000.00	/

2,300 50%

	4,042,448,193. 63		4,042,448,193. 63	2,150,871,731.8 4	2,150,871,731.84
	1,549,277,628. 39		1,549,277,628. 39	1,460,740,986.2 9	1,460,740,986.29
	2,493,170,565. 24		2,493,170,565. 24	690,130,745.55	690,130,745.55
	4,042,448,193. 63		4,042,448,193. 63	2,150,871,731.8 4	2,150,871,731.84

/	1,673,470,394.92			1,673,470,394.92
	1,549,277,628.39			1,549,277,628.39
	-124,192,766.53			-124,192,766.53

	2,888,016.00	142,617,105.20		145,505,121.20					1.21%	4,969,333.92
	93,000,000.00			93,000,000.00					2.29%	1,830,000.00
		300,000,000.00		300,000,000.00					6.65%	
	38,118,697.33	38,422,714.49		76,541,411.82						
1	2,380,000.00			2,380,000.00						
3	53,000,000.00			53,000,000.00						
4	85,000,000.00		85,000,000.00							
4	100,150,000.00			100,150,000.00						
1	68,000,000.00		68,000,000.00							
363	200,000,000.00			200,000,000.00						
3	47,594,032			47,594,032						

	.22			.22						
1		20,000,000.00		20,000,000.00						
		1,455,000,000.00		1,455,000,000.00						
	690,130,745.55	1,956,039,819.69	153,000,000.00	2,493,170,565.24					--	6,799,333.92

□ √

1. 1,891,576,461.79 87.94%

2. 1%

				1,728,577,015.30	407,710,741.64	1,320,866,273.66
	972,212,070.90		972,212,070.90	296,840,600.00		296,840,600.00
	972,212,070.90		972,212,070.90	2,025,417,615.30	407,710,741.64	1,617,706,873.66

□ √

1. 645,494,802.76 39.90%

2.

1%

, 2016

97, 221. 21

□ √

□ √

□ √

1.	94,645,849.01	1,671,134.79	7,597,934.90	2,548,430.07	106,463,348.77
2.			488,263.83	2,846,423.08	3,334,686.91
1			488,263.83	2,846,423.08	3,334,686.91
2					
3					
3.					
1					
4.	94,645,849.01	1,671,134.79	8,086,198.73	5,394,853.15	109,798,035.68
1.	19,040,114.37	1,240,283.94	2,737,830.79	1,185,742.85	24,203,971.95
2.	3,017,525.04	99,226.92	1,883,969.46	621,043.34	5,621,764.76
1	3,017,525.04	99,226.92	1,883,969.46	621,043.34	5,621,764.76

3.					
1					
4.	22,057,639.41	1,339,510.86	4,621,800.25	1,806,786.19	29,825,736.71
1.					
2.					
1					
3.					
1					
4.					
1.	72,588,209.60	331,623.93	3,464,398.48	3,588,066.96	79,972,298.97
2.	75,605,734.64	430,850.85	4,860,104.11	1,362,687.22	82,259,376.82

✓

✓

✓

	72,588,209.60	

✓

✓

✓

✓

✓

1.				2,767,330.00	2,767,330.00
2.				1,250,000.00	1,250,000.00
1				1,250,000.00	1,250,000.00
2					
3					
3.					
1					
4.				4,017,330.00	4,017,330.00

1.				1,486,848.75	1,486,848.75
2.				401,733.00	401,733.00
1				401,733.00	401,733.00
3.					
1					
4.				1,888,581.75	1,888,581.75
1.					
2.					
1					
3.					
1					
4.					
1.				2,128,748.25	2,128,748.25
2.				1,280,481.25	1,280,481.25

√

√

√

	376,881.86		376,881.86	
	376,881.86		376,881.86	

	453,530,586.79	113,382,646.70	443,190,884.96	110,797,721.24
	150,339,542.84	37,584,885.70	7,173,603.08	1,793,400.77
	830,933.06	207,733.27	1,644,826.09	411,206.51
	311,230,256.45	77,807,564.11	261,119,482.39	65,279,870.59
			376,881.88	94,220.47
	915,931,319.14	228,982,829.78	713,505,678.40	178,376,419.58

			402,021,593.48	100,505,398.38
			402,021,593.48	100,505,398.38

		228,982,829.78		178,376,419.58
				100,505,398.38

□ ✓

1. 50,606,410.20 28.37%

2. 0

	104,502,892.75	14,708,770.04
	104,502,892.75	14,708,770.04

89,794,122.71 610.48%

□ ✓

	214,000,000.00	300,000,000.00
	214,000,000.00	300,000,000.00

□ ✓

□ ✓

□ √

□ √

□ √

	278,792,115.61	211,170,333.67	160,331,742.38	329,630,706.90
-	146,604.24	14,695,077.87	11,088,654.09	3,753,028.02
	278,938,719.85	225,865,411.54	171,420,396.47	333,383,734.92

1. s	261,119,482.39	188,049,479.60	137,938,705.54	311,230,256.45
2.		2,385,299.62	2,385,299.62	
3.	69,488,688	9,367,283.87	9,067,674.52	

1.	20,135.90	8,791,002.49	8,802,906.74	8,231.65
2.	508.34	435,888.04	418,407.35	17,989.03
3.	125,960.00	5,468,187.34	1,867,340.00	3,726,807.34
	146,604.24	14,695,077.87	11,088,654.09	3,753,028.02

	12,037,304.88	
	125,918,291.10	197,072,689.06
	2,327,968.80	1,001,217.29
	878,723.79	887,307.00
		12,675,814.18
	224,380.43	189,974.84
	376,595.93	380,274.41
	321,640.93	253,591.61
	251,063.95	253,516.28
	23,799.28	
	142,359,769.09	212,714,384.67

	30,245.33	91,350.00
	1,709,400.00	521,805.56
	1,739,645.33	613,155.56

	1,065,906.32	1,065,906.32
	1,065,906.32	1,065,906.32

1

	23,133,239.06	549,299.06
	2,745,088.70	2,799,909.32
	1,944,660.14	897,493.67
	48,743,599.54	27,636,510.71
	2,122,307.81	14,396,174.86
	878,580.57	12,905,869.31
	4,358,817.19	5,049,173.27
	83,926,293.01	64,234,430.20

19,691,862.81 30.66%

□ ✓

□ ✓

	999,000,000.00	130,000,000.00
	999,000,000.00	130,000,000.00

✓

✓

✓

	830,933.06	1,644,826.09
	830,933.06	1,644,826.09

✓

✓

✓

□ ✓

□ ✓

		+ —					
	1,545,245,866. 00			1,545,245,866. 00		1,545,245,866. 00	3,090,491,732. 00

2016 2 24

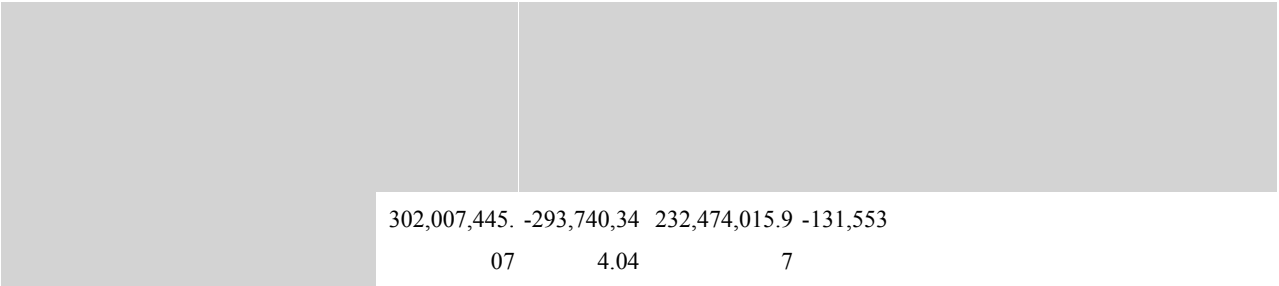
10 10

2016

7

□ ✓

	4,149,445,394.75	1,545,245,866.00
	139,931,316.94	139,931,316.94
	4,289,376,711.69	1,545,245,866.00
		2,744,130,845.69



302,007,445.	-293,740,34	232,474,015.9	-131,553
07	4.04	7	

2012 20

31,019,520.28

	1,133,482,546.51	827,617,733.07
	1,133,482,546.51	827,617,733.07
	515,237,568.79	453,951,218.69
	51,523,756.89	45,395,121.87
	31,019,520.28	43,553,701.83
	46,357,375.98	36,440,020.62
	25,761,878.44	22,697,560.93
	1,494,057,583.71	1,133,482,546.51

- 1) 0.00
- 2) 0.00
- 3) 0.00
- 4) 0.00
- 5) 0.00

	1,009,964,779.07	327,368,583.67	1,141,628,331.94	541,179,790.38
	3,607,331.33	1,647,315.39	9,344,054.50	2,088,226.47
	1,013,572,110.40	329,015,899.06	1,150,972,386.44	543,268,016.85

	3,577,027.41	4,264,176.03
	1,533,012.46	1,827,504.01
	807,501.11	

	83,288.99	
	4,080.00	
	1,583,503.71	
	20,063,381.46	60,836,648.18
	1,022,008.54	1,217,967.88
	1,063,425.47	1,219,715.70
	29,737,229.15	69,366,011.80

□ √

	214,542,707.78	229,062,439.83
	8,462,226.58	9,471,060.35
	3,006,777.00	3,026,969.00
	9,232,670.92	8,904,141.66
	10,703,376.66	9,265,677.38
	1,011,029.32	1,068,910.00
	6,284,191.77	6,838,875.35
	5,621,764.76	4,327,026.27
	778,614.86	4,166,607.14
	14,679,709.50	14,116,594.38
	2,818,375.34	2,419,413.00
	710,234.47	1,390,260.32
	2,404,619.20	6,566,005.04
	7,035,354.53	5,822,110.02
	287,291,652.69	306,446,089.74

□ √

	10,339,701.83	17,894,055.80
		144,023,633.04
		3,450,000.00
	10,339,701.83	165,367,688.84

155,027,987.01      93.75%

	-18,973,173.23	-5,359,012.01
	-18,973,173.23	-5,359,012.01

	9,423,733.34	7,465,630.80
	15,897,417.61	3,566,380.82
	59,004,247.23	58,768,963.83
	77,340,365.19	4,632,588.10
	126,653,866.12	450,568,607.03
	5,242,465.75	
	293,562,095.24	525,002,170.58

231,440,075.34      44.08%

	1,030,000.00	550,000.00	1,030,000.00
	1,500.00	62,001.37	1,500.00
	1,031,500.00	612,001.37	1,031,500.00

								/
2016						1,000,000.00		
2015						20,000.00		
						10,000.00		
							300,000.00	
							150,000.00	
							100,000.00	
	--	--	--	--	--	1,030,000.00	550,000.00	--

		26,754.75	
		26,754.75	
	44,032.00	106,041.20	44,032.00
		13,936.00	
	44,032.00	146,731.95	44,032.00

	189,864,329.13	221,698,883.78
	-19,558,218.58	-67,480,463.46
	170,306,110.55	154,218,420.32

		685,543,679.34
/		171,385,919.84
		-2,046,083.51
		966,274.22
		170,306,110.55

16,087,690.23      10.43%

60

	1,030,000.00	300,000.00
	22,500,000.00	923,446.01
	61,679,494.64	39,914,840.01
	11,753,669.03	6,562,001.37
	96,963,163.67	47,700,287.39

	40,138,202.65	41,317,721.76
	44,032.00	106,041.20
		42,089,518.21
	72,223,973.79	70,501,082.85
	112,406,208.44	154,014,364.02

√

√

	2,747,000,000.00	800,000,000.00
	2,747,000,000.00	800,000,000.00

	550,000.00	730,578.51
	1,907,552,419.45	715,156,250.00
	1,908,102,419.45	715,886,828.51

1	--	--
	515,237,568.79	453,951,218.69
	10,339,701.83	165,367,688.84
	7,269,080.15	6,415,252.74
	401,733.00	276,733.00
	376,881.86	2,261,291.24
“ ”		26,754.75
“ ”	18,973,173.23	5,359,012.01
“ ”	-268,240,944.29	-513,970,158.96
“ ”	-19,558,218.58	-67,480,463.46
“ ”	-197,158,798.05	137,846,306.91
“ ”	-39,335,849.51	463,653,292.57
	129,586,914.12	-297,395,258.44
	157,891,242.55	356,311,669.89
2	--	--
3	--	--
	675,296,574.26	2,173,697,442.81
	2,173,697,442.81	457,352,102.00
	-1,498,400,868.55	1,716,345,340.81

□ √

□ √

	675,296,574.26	2,173,697,442.81
	2,144.01	17,334.21
	626,636,784.56	2,155,934,345.66
	48,657,645.69	17,745,762.94
	675,296,574.26	2,173,697,442.81

“ ”

 √ √ √ √ √

1.

2.

4

2

5

6

5%

3.

	228,322,005.88	516,109,411.00
	972,212,070.90	1,617,706,873.66
	4,042,448,193.63	2,150,871,731.84
	1,711,500,000.00	1,541,500,000.00
	714,000,000.00	
	7,668,482,270.41	5,826,188,016.50

1.

2.

1

2

3

4

5

6

1.

2.

1

2

3

4

5

€ î

||

/

2016  
2,538.11

3.04

2016 12 31

4 c " a

--

--

--

			1,000,000.00	34.58%	34.58%
			200,000.00	21.33%	21.33%

✓

✓

✓

✓

✓

✓

✓

✓

✓

	11, 545, 500. 00	13, 249, 010. 00

a. 2006 6 12

239,976,258.19

2016 12 31  
131,911,626.65

239,976,258.19

148,952,342.20

17,040,715.55

2014

b. 3.05  
 “16 CP003” 5%/ 100 /  
 “16 CP003” “ ” 3 “16  
 CP003” 6 0 0

a. 2015 2 13 A 2,000  
 2016 8 5  
 b. 2015 3 30  
 2  
 c. 2015 10 29 20,000  
 3  
 d. 2016 8 19 50,000.00  
 3  
 e. 2016 9 19 A 1,000  
 f. 2016 9 27 49,000.00  
 1  
 g. 2016 12 20 10  
 2

√

√

√

√

---

✓

✓

✓

✓

	61,809,834.64
--	---------------

✓

□ ✓

□ ✓

□ ✓

□ ✓

□ ✓

□ ✓

□ ✓

□ ✓

	712,082,317.22	85.51%	407,710,741.64	57.26%	304,371,575.58					
	118,590,553.08	14.24%	33,283,260.48	28.07%	85,307,292.60	286,615,605.94	100.00%	23,980,143.32	8.37%	262,635,462.62
	2,073,169.33	0.25%	1,036,584.67	50%	1,036,584.67					
	832,746,039.63		442,030,586.79		390,715,452.84	286,615,605.94		23,980,143.32		262,635,462.62

√ □

	494,978,211.74	299,158,688.90		
	217,104,105.48	108,552,052.74	50.00%	
	712,082,317.22	407,710,741.64	--	--

√ □

	2,073,169.33	1,036,584.67	50%	
	2,073,169.33	1,036,584.67		

√ □

1			
1	40,754,737.78	2,037,736.88	5.00%
1 2	30,474,409.12	6,094,881.82	20.00%
2 3	44,421,528.81	22,210,764.41	50.00%
3	2,939,877.37	2,939,877.37	100.00%
	118,590,553.08	33,283,260.48	

□ √

□ √

10,339,701.83

0.00

□ √

1,678,264.21

1,239,087.72

109,764,704.75

96,950,143.14

		494,978,211.74	3	59.44%	299,158,688.90
		217,104,105.48	3	26.07%	108,552,052.74
		109,764,704.75	3	13.18%	29,946,501.41
		2,364,394.26	3	0.28%	2,343,103.51
		2,073,169.33	1	0.25%	1,036,584.67
	--	826,284,585.56	--	99.22%	441,036,931.23

✓

✓

128,079,990.22      48.77%


✓

□ √

	1,009,964,779.07	327,368,583.67	1,141,628,331.94	541,179,790.38
	3,607,331.33	1,647,315.39	9,344,054.50	2,088,226.47
	1,013,572,110.40	329,015,899.06	1,150,972,386.44	543,268,016.85

	9,423,733.34	7,465,630.80
	15,897,417.61	3,566,380.82
	59,004,247.23	58,768,963.83
	77,340,365.19	4,632,588.10
	126,653,866.12	450,568,607.03
	5,242,465.75	
	293,562,095.24	525,002,170.58

√ □

	1,030,000.00	
	126,653,866.12	
	-42,532.00	
	31,910,333.53	
	95,731,000.59	--

1 —

1 —

√ □

	176,200,333.24	
	15,897,417.61	
	-18,973,173.23	

		/	/
	6.79%	0.1667	0.1667
	5.53%	0.1357	0.1357

---

--	--	--	--

✓

✓

✓

2017 3 7